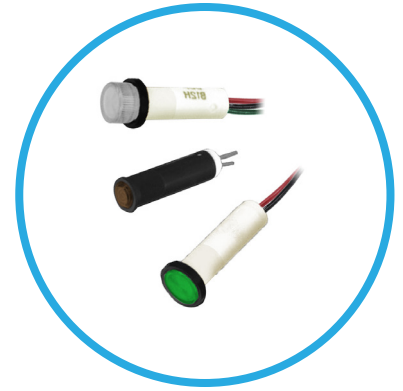


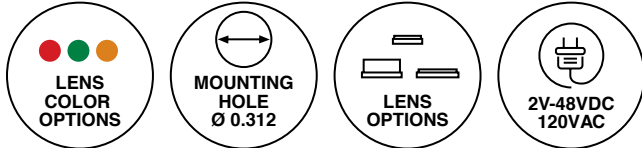
50 Series

Ø .312" (7.92mm)

LED Panel Mount Indicator



Prominent and flush LED indicator with fresnel lens in single and tri-color LED, Voltage 2VDC - 120VAC.



Key Features

- Mounting hole size: .312" (7.92mm)
- Lens type: semi-dome, wide hi-hat, and wide flush with fresnel pattern lens
- Lens color options: red, green, amber, and water clear
- LED single color options: red, amber and green
- Tri-color option: red/amber/green
- Terminals: straight leads or wire leads (6" wire leads, 24 AWG)
- Wire leads: 6.0" total length (nominal) / .50" stripped (nominal), red anode/black cathode, 24 AWG TPB UL1061 insulation
- Voltage: 2-48 VDC or 120VAC
- T-1 3/4 (5mm) LED
- Low power consumption - uses up to 90% less energy than an incandescent indicator
- Offered with a variety of lens options all featured with fresnel pattern lens which provide excellent light focus and assure maximum light output
- Available with a variety of LEDs including AlInGaP and InGaN technology for high brightness applications, single color, tri-color and with integrated resistors
- Mounts with spring retainer and washer (included)
- Offered with black bezel that enhances LED contrast
- Suitable for high vibration applications
- LEDs operate significantly cooler than traditional lamps
- For custom cable length, connectors or colors contact VCC
- Compliant with RoHS and REACH

Ordering Data

53 (Semi-Dome Lens)



Example:

53-NWA120-CAO

53 Series Semi-Dome Lens, Amber LED,
Clear Amber Lens, 120V with Straight Leads

Part Number	Color	λ_{pk} (nm)	Iv (mcd)	Viewing Angle	Lens Color	Lens Diffusion	Terminals	Voltage/Current	
								Design Vf/If	Max Vf/If
53-NWA120-CAO	Amber	592	2800	30	Amber	Clear	Straight Leads	120VAC/3.5mA	130VAC/4mA
53-NWG120-CGO	Green	520	2400	45	Green	Clear	Straight Leads	120VAC/3.5mA	130VAC/4mA
53-NWR120-CRO	Red	634	2800	30	Red	Clear	Straight Leads	120VAC/3.5mA	130VAC/4mA

561 (Wide Hi-Hat Lens)



Example:

561W-RAG2-CWO

561 Series Wide Hi-Hat Lens,
Red/Amber/Green LED, Clear Lens, 2V with Wire Leads

Part Number	Color	λ_{pk} (nm)	Iv (mcd)	Viewing Angle	Lens Color	Lens Diffusion	Terminals	Voltage/Current	
								Design Vf/If	Max Vf/If
561W-RAG2-CWO	Red/Amb/Grn	630/565	6/6/6	60	Clear	Clear	Wire Leads	2V	-

564 (Wide Flush Lens)



Example:

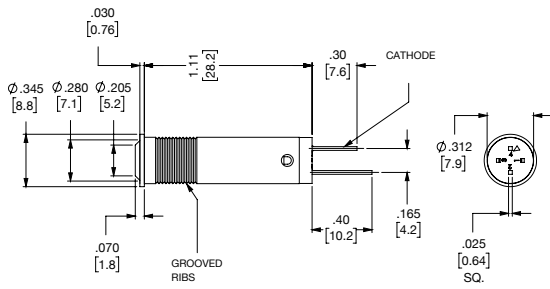
564W-GLP48-CWO-R-

564 Series Wide Flush Lens,
Green LED, Clear Lens, 48V with Wire Leads

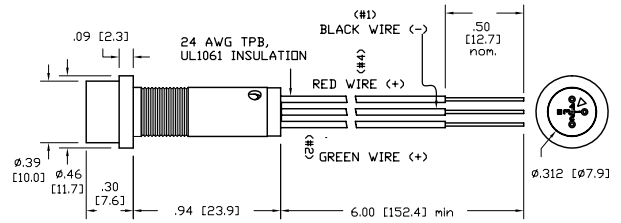
Part Number	Color	λ_{pk} (nm)	Iv (mcd)	Viewing Angle	Lens Color	Lens Diffusion	Terminals	Voltage/Current	
								Design Vf/If	Max Vf/If
564W-NWG120-CGO-R-	Green	520	2400	45	Green	Clear	Wire Leads	120VAC/3.5mA	130VAC/4mA
564W-GLP48-CWO-R-	Green	565	2.3	50	Clear	Clear	Wire Leads	48V	-

Product Dimensions

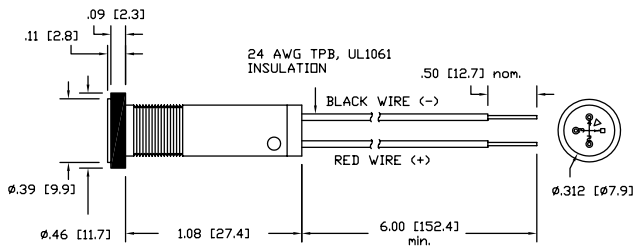
53 (Semi-Dome Lens)



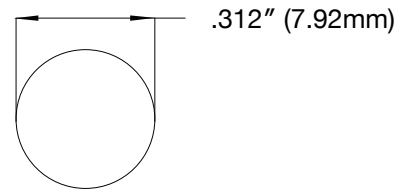
561 (Wide Hi-Hat Lens)



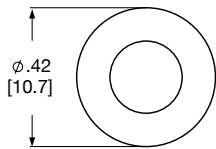
564 (Wide Flush Lens)



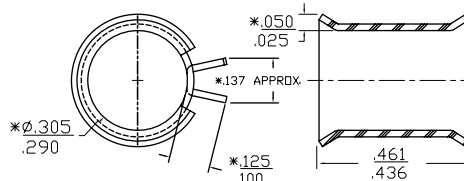
Recommended Mounting Hole



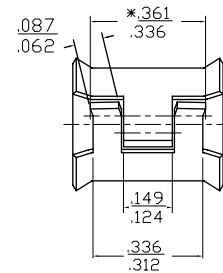
Mounting Hardware



NW5



TC5



Notes:

1. All dimensions are in inches [millimeters]
2. Tolerance is $\pm 0.25''$ unless otherwise noted.
3. The specifications, characteristics and technical data described in the datasheet are subject to change without prior notice.

Compliances and Approvals

